



INNOVATIVE ENERGY, INC.
Reflective Insulation Radiant Barriers Insulated Packaging

WWW.INNOVATIVEENERGY.COM



FROM A SUPPLIER THAT PUTS QUALITY FIRST

AstroShield Reflective Insulation is designed with air encapsulated polyethylene bubbles surrounded by highly reflective surface.

Astroshield blocks as much as 95% of radiant heat, making it a great choice for your insulation requirements. It's ability to reflect heat also works well to enhance your current insulation assembly.

**Residential - Agriculture - Do-it-yourself - Commerical
HVACR & Plumbing - Automotive - Industrial OEM**



FAMILY OWNED SINCE 1980!

Product Features

- Class A /Class 1 Fire Rating
- Lightweight and easy to install
- Available in numerous stock sizes
- Available in single and double bubble structures
- Reduces Building Condensation

R-Values

R-Values for reflective insulation products are calculated based on the installation of the product. Contact your AstroShield distributor for R-Values specific to your application.



219-696-3639

CROWN POINT, INDIANA



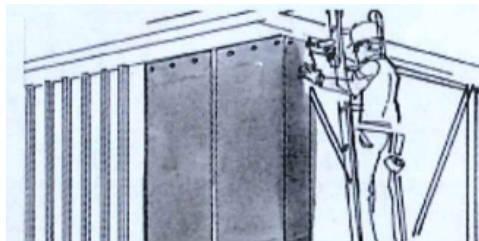
INNOVATIVE ENERGY, INC.

Reflective Insulation Radiant Barriers Insulated Packaging



INSTALLATION GUIDE

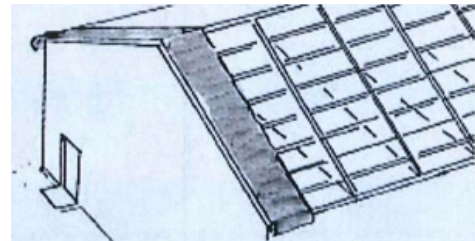
Vertical Installation in Walls



Horizontal Installation in Walls



Installation in roofs



Measure the length to be applied and then cut a similar length of AstroShield, adding an inch or two to assure complete coverage at top and bottom. At corners, wrap around the corner and continue vertical installation. Cut a second length and position next to the first length. Butt sides evenly together or slightly overlap.

Snap a line across the entire wall length to establish a straight edge. Measure the length to be applied from corner to corner, allowing an additional amount of overlapping. Starting at the bottom of the wall, overlap the foundation approximately 3", keeping the top edge parallel to the snap line. Wrap around the corner and staple or tape in place. Install the next length parallel to the first length, overlapping the first layer 2".

Starting at the end of the roofing framework, measure the length across the trusses, adding enough to allow overhang at both ends. Cut the first piece and lay in place. Pull tight from both ends and attach to trusses or purlins using self-tapping screws and washers or with pressure-sensitive reflective tape. Cut the second length, laying parallel to first. Make sure to butt or slightly overlap edges.

To achieve a moisture barrier, you must tape all seams with Innovative Energy reflective tape or comparable product.



IMPORTANT WARNING: NEVER INSTALL OVER OR NEAR DEFECTIVE OR EXPOSED ELECTRICAL WIRING.



For complete Installation Guidelines, visit www.innovativeenergy.com or scan QR code

SPECIFICATIONS

ASTME 84-08

Flame Spread 0

Smoke Developed <30

ASTME 1371

Reflectivity 95%

Emissivity 5%

ASTME 96

Water Vapor Transmission

<0.2 perms

ASTM C 1258

Temp/Humidity Resistance

Pass

ASTM C 1224

Bleeding and Delamination

None

Pliability

No Cracking or Delamination

Innovative Energy Limited Warranty:

AstroShield and Astro-Armour products are warranted against defects in materials and workmanship for 5 Years in approved building or O.E.M. applications when installed in accordance with Innovative Energy's written instructions. Liability under this warranty is limited to replacement of the product found to be defective and does not cover merchantability, fitness for specific application, or any labor costs. Contact Innovative Energy for proper handling of any suspected defective material. For details on General Terms and Conditions of this warranty and warranty for applications other than mentioned above, please contact Innovative Energy.

WARRANTY DISCLAIMERS AND LIMITATIONS ON BUILDING APPLICATIONS: AstroShield and Astro-Armour products should always be stored in a clean, dry environment with the rolls left in the poly bags they came in. Although AstroShield and Astro-Armour products have UV and Thermal blockers built into the structures, the warranty does not cover installation in open or exposed applications such as lean-to's and open sided animal confinement buildings.

Applications where chemicals and off-gassing products are present may void the warranty.

AstroShield products are tested in accordance with ASTM (American Society of Testing and Materials) Standards and ICC (International Code Council) Codes. Copies of test reports are available by contacting your nearest AstroShield distributor.

CONNECT WITH US ON



800-776-3645 / 219-696-3639

COMMERCIALSALES@INNOVATIVEENERGY.COM

WWW.INNOVATIVEENERGY.COM